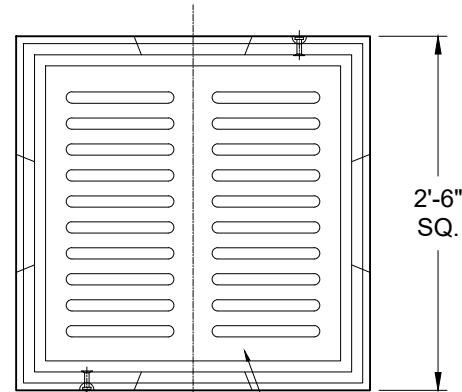


(2) DOGBONE LIFTERS

2'-0" SQ.

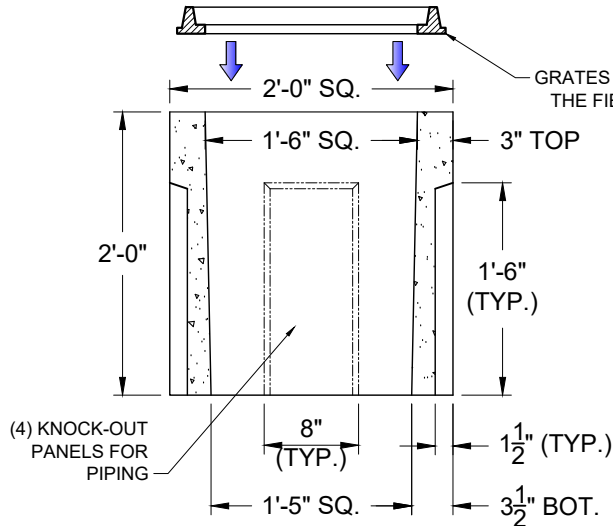
2012 CAST IRON GRATE WITH FABRICATED STEEL FRAME DESIGNED FOR H-20 VEHICLE LOADING  
GRATE SIZE = 20" X 20"



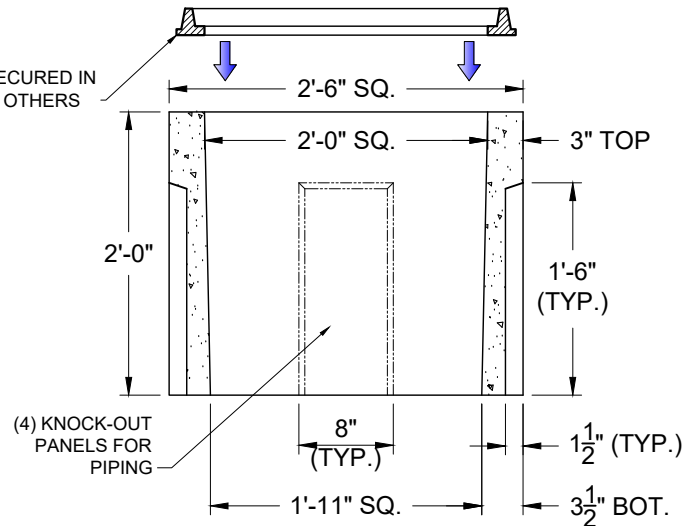
(2) DOGBONE LIFTERS

2'-6" SQ.

2012 CAST IRON GRATE WITH FABRICATED STEEL FRAME DESIGNED FOR H-20 VEHICLE LOADING  
GRATE SIZE = 26" X 26"



**MODEL CB-18 RISER**



**MODEL CB-24 RISER**

**NOTES:**

- 1- CONCRETE TYPE II PORTLAND CEMENT, ASTM C 260-86. MINIMUM COMPRESSIVE STRENGTH 3,000 PSI @ 28 DAYS.
- 2- NO. 3 REINFORCING BAR - ASTM A 615, GRADE 40.
- 3- SECONDARY REINFORCING: COLLATED FIBERILLATED POLYPROPYLENE FIBER.
- 4- STRUCTURAL CALCULATIONS AVAILABLE UPON REQUEST.
- 5- EXTENSIONS TOP GRADE AVAILABLE IN 6", 12", 18", & 24" INCREMENTS. GRATE FRAME AVAILABLE - SECURED IN THE FIELD BY OTHERS.
- 6- AVAILABLE WITH BOTTOM - ADD 3" TO OVERALL HEIGHT.



**DESCRIPTION:**

**DRAINAGE  
CATCH BASINS**

**DESIGN SPECIFICATIONS**

**DESIGNED FOR  
H-20 LOADING**

WITH DRY SOIL CONDITIONS (WATER LEVEL BELOW TANK). SUIABLE SUB-BASE BEDDED WITH GRANULAR MATERIAL SHALL BE PREPARED TO HANDLE ANTICIPATED LOADS. FOR COMPLETE DESIGN AND PRODUCT INFORMATION, PLEASE CONTACT PRO-CAST PRODUCTS.

PRO-CAST PRODUCTS RESERVES THE RIGHT TO MAKE CHANGES TO PRODUCT DESIGN AND/OR DIMENSIONS WITHOUT NOTICE. PLEASE CONTACT PRO-CAST PRODUCTS WHENEVER NECESSARY FOR CONFIRMATION OR ADVICE ON PRODUCT DESIGN.

NOTES: REF. DWG. #1104

SCALE: NOT TO SCALE

DRAWN BY: TPC 07/13/2022

REVISED BY:

CHECKED BY:

DRAWING NO.

**CB1**